

25/30/35 BE-X

BE-X SERIES BATTERY FORKLIFT TRUCK



Load Capacity
2500 – 3500 kg

Engine Power
10 – 14 kW

Lift Height
3000 – 6000 mm

**HIGH ON QUALITY.
LOW ON COST.**

The new HD Hyundai BE-X Series Electric Forklifts

Introducing the new BE-X battery powered electric forklifts. Ranging from 2.5 - 3.5 tonnes, the new range offers the high productivity, comfort and safety you expect from a world-class brand like HD Hyundai XiteSolution, but at a low-cost price. These budget-friendly but reliable machines are also high on efficiency and low on noise.



HIGH ON PRODUCTIVITY

Productivity has been increased through optimised vehicle performance with the use of iron phosphate lithium-ion batteries and IP54 drive and pump motors for longer life and improved cost-effectiveness.

Low Energy consumption

Energy efficiency has been improved by 8.2% compared with the 9F Series thanks to the use of drive and axle assemblies with less power loss whose drive and hydraulic performances are optimised for typical working conditions.

Easier Servicing

A single-drive axle system, IP54 motors and 80V batteries allows the machines to be serviced outdoors for greater convenience. Driving noise has also been reduced by 6.5dB thanks to the use of low-noise axles.

Optimised working

Operating has been made more efficient with the easy selection of driving and mast work speeds to match work conditions, with the use of up/down buttons in the cluster.

Low centre of gravity

A deep drop type frame allows the batteries to be placed between the front wheels and rear wheels to lower the body's centre of gravity, providing greater driving and lifting stability.

ZAPI Controller

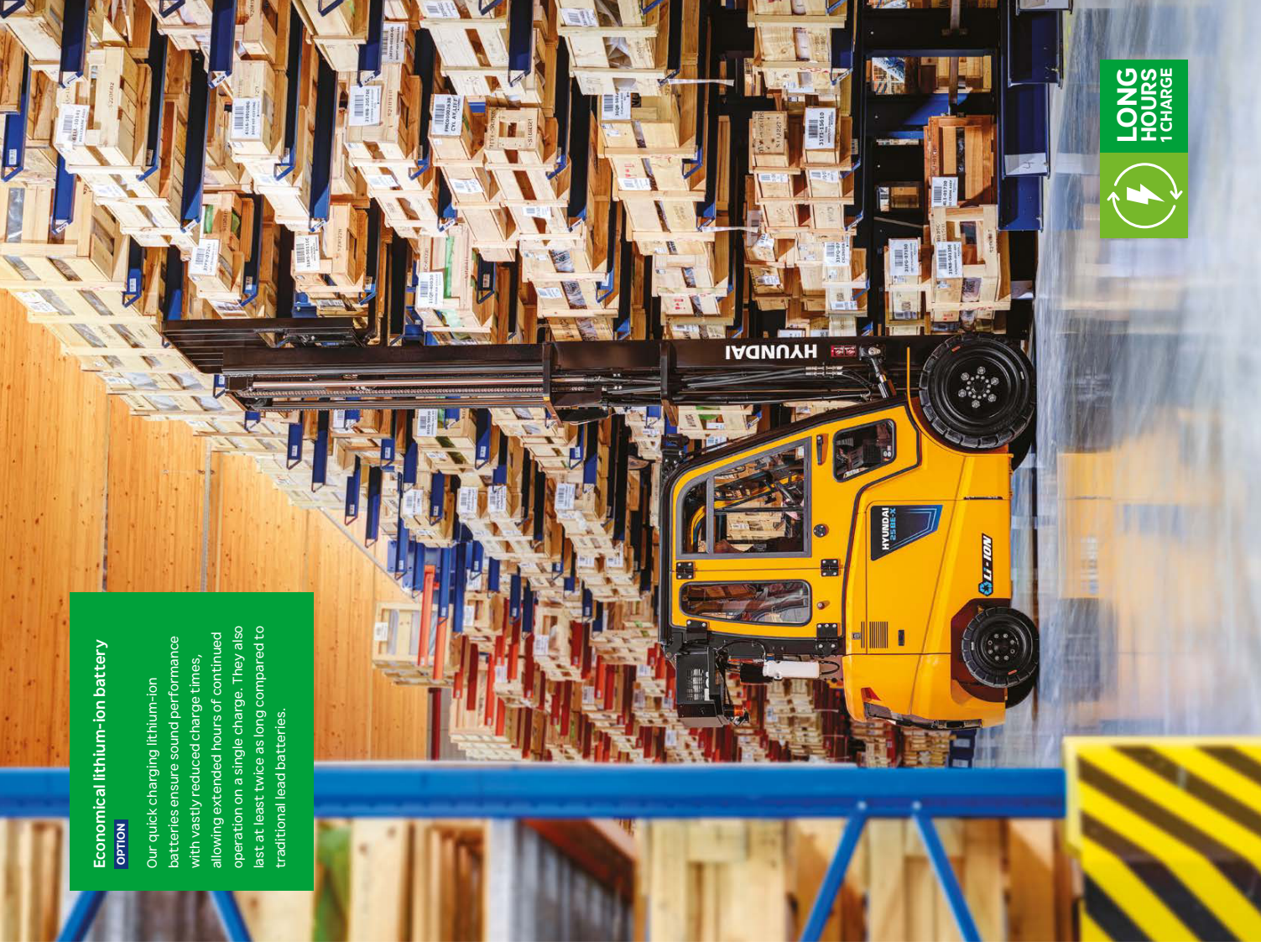
For improved controller system reliability that meets EU safety regulations, two waterproof and dust-proof IP65 ZAPI controllers are installed.



Economical lithium-ion battery

OPTION

Our quick charging lithium-ion batteries ensure sound performance with vastly reduced charge times, allowing extended hours of continued operation on a single charge. They also last at least twice as long compared to traditional lead batteries.



LONG HOURS
OPERATION
1 CHARGE

HIGH ON COMFORT & EFFICIENCY

A comfortable operator is a productive operator. That's why we've increased the cab space and added numerous functions that allow the operator to work more efficiently and comfortably.



Redesigned cab

We've taken the space and optimised design of a sister model machine, B-X and used it for our BE-X machines for more convenient and efficient operation.

We've taken the representation of the human body, evaluated volunteer operators in various applications to identify the optimum driving position.

Hydraulic boosted-type steering wheel

The external diameter of the HPS-type steering wheel has been reduced by 20mm for extra convenience and the wheel column can be tilted 12.5 degrees forwards or backwards to suit the operator.

Easy access cab

To make cab access easier, the first and second steps have been lowered whilst the seat height has increased to improve visibility. The distance between the seat and head guard has also been increased by about 40mm, for enhanced comfort.

Multifunctional digital cluster

The operator can clearly check operating information in real time on the multifunction digital cluster. Many additional functions are also embedded in the cluster for safe and convenient equipment management.

Simple MCV lever system

The frequently used MCV lever is conveniently placed to the right of the operator. This reduces movement and fatigue compared with the dashboard-fixed type.



365 DAYS COMFORT



HIGH ON SAFETY

Operator safety is and always will be a high priority for HD Hyundai. The risk of accidents while working has been fundamentally eliminated using scientific vehicle body design and effective safety systems.

▶ LED safety warning lights

Bright and long-life LED lights are fitted to the front, rear and direction indicators. A beacon lamp, blue spots and red zone lamps are optional to indicate movement for the benefit of surrounding workers.

Anti-Roll back system

This system prevents the forklift from rolling down a slope when the accelerator and brake pedal are not applied. It also offers improved ramp start-up abilities.



◀ Front & rear cameras

The wireless camera system supplies the two-channel monitor with information to the front and rear. A front camera is installed on the lateral side of the fork, helping in the safe identification of the position of pallets during high-rack operation.



TECHNOLOGY
TO KEEP YOU

SAFE

▶ Speed limit control

A maximum travel speed can be set to meet the safety speed of the site through a multifunctional monitor. Even when maximum speed is limited, gradeability and lifting performance are maintained at top levels.

▶ Travel speed limiter when driving with elevated load

OPTION

The travel speed is limited to 3km/h when the forks are lifted to a height of 500mm or are above the Free Lift height, to ensure the load doesn't fall off and the forklift doesn't get overturned.

▶ Rear grip bar & horn

The rear grip with horn embedded allows the driver to keep a comfortable posture during reverse driving and operate the horn quickly in case of an emergency.

OPSS system

The OPSS restricts driving, lifting, and tilting when the operator leaves the driver's seat in order to prevent accidents.



LOW ON COST OF OWNERSHIP

BE-X Series electric forklifts have been designed to reduce maintenance and costs using innovative energy saving features and reliable, durable and quick replacement parts.

Quick battery replacement

A deep drop type battery can be easily removed and installed from the side of the forklift using a small forklift or electric transpallet with a minimum capacity of 1.5 tonne. There is no need for expensive equipment like a crane.

Convenient battery charging

Batteries can be charged by connecting a charger connector to a charging port, without the separation of battery cables connected to the frame. A safety sensor completely blocks any operation of the equipment while being connected to the charger.



Hydraulic motor cooling system

For the efficient cooling of the Hydraulic motor, the outdoor air inlet fan and indoor air outlet fan are separated using the left and right covers.

Safety warning

Issues relating to safety and performance, such as low brake oil level, battery discharge, and high temperature in the controller and motor will trigger the warning sound and lamp. Programming and adjustment can be performed through a Zapi Smart Console Programmer which is sold separately.



Waterproof and dustproof key switches

To increase the reliability of the electric/electronic system, an ignition key switch with a cap is used. Made by Honeywell, this prevents moisture and dust from getting in.

Sealed micro switches - MCV

Sealed micro switches are used in the hydraulic control lever system, keeping it protected from outdoor dust and water for greater reliability.



TAKE THE TOUR!



High on productivity

- Deep drop type vehicle structure-Improved driving and work safety
- Achieves the best energy efficiency level in its vehicle class
- LiFePo4 lithium-ion battery with excellent price-to-performance characteristics Option
- IP Class 54 driving and pump motors - Expanded service area
- Application of Dual Micom ZAPI Controller
- Enhanced energy efficiency by 8.2%
- Application of power selection button for drive and pump motors

High on comfort and efficiency

- Ergonomically redesigned operator room
- A new cluster with superior visibility that can be manipulated easily
- Hood fixation-type hydraulic control lever
- Optimum step height and width for convenient getting on/off
- A/C & heater with improved cooling and heating performance **OPTION**
- Noise in the driver's seat is reduced by 6.5 dB
- Two-channel wireless front/rear cameras **OPTION**

High on productivity

- Speed limit
- Seat belt interlock **OPTION**
- Speed limiting function when traveling with elevated load **OPTION**
- Operator Presence Sensing System (OPSS)
- Antiroll back system prevents the machine from rolling back after coming to a stop on an incline
- Safety warning lamp - Blue spots and red zones **OPTION**

High on comfort and efficiency

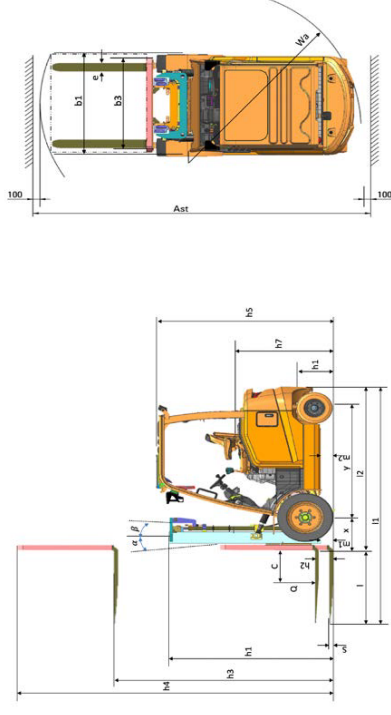
- A battery replacement system that doesn't require a crane structure
- Battery connector specialized for charging
- Controller with high reliability and self-diagnosis capability
- Sealed micro switches - MCV
- Hydraulic motor room cooling system without air vortex
- Long-lifetime LED lamps - Front/Rear work lamps and turn signals

25/30/35 BE-X SPECIFICATIONS

IDENTIFICATION		Hyundai	
1.1	Manufacturer	25BE-X	30BE-X
1.2	Manufacturer's type designation	Electric-80V seated	Electric-80V seated
1.3	Type Of Operation	3000	3000
1.4	Load Capacity / Rated Load	500	500
1.5	Load Center Distance	473	473
1.6	Load Distance, Center Of Drive Axle To Fork	1490	1480
WEIGHTS			
2.1	Service Weight	4484	4947
2.2	Axle Loading, Loaded/Front/Rear	600/787	7020/927
2.3	Axle Loading, Unloaded/Front/Rear	1974/250	2282/2465
WHEELS, CHASSIS			
3.1	Tires, Solid Rubber, Pneumatic/Non Marking	SP	SP
3.2	Tire Size Front	28x9.5/16	28x9.5/16
3.3	Tire Size Rear	18x7.8/16	18x7.8/16
3.5	Wheels, Number Front / Rear	2x/2	2x/2
3.6	Tread, Front	1005	1005
3.7	Tread, Rear	996	996
BASIC DIMENSIONS			
4.1	Tilt Of Mast Forward/Backward	6/10	6/10
4.2	Height, Mast Lowered	2040	2040
4.3	Free Lift	150	150
4.4	Lift Height	3005	3005
4.5	Height, Mast Extended	4185	4185
4.7	Height Of Overhead Guard (Cabin)	2175	2175
4.8	Seat Height / Stand Height Rel. To Sp	1200	1200
4.12	Coupling Height	480	480
4.19	Overall Length	3410	3400
4.20	Length To Face Of Forks	2260	2502
4.21	Overall Width	1215	1215
4.22	Fork Dimensions	45x100x1050	45x125x1050
4.23	Fork Carriage Ie228, Class / Type A, B	II/A	III/A
4.24	Fork Carriage Width	1102	1102
4.31	Ground Clearance, Below Mast, Loaded	142	142
4.32	Ground Clearance, Center Of Wheelbase	160	160
4.341	Axle Width For Pallets 1000 X 1200, Crossways	3858	4040
4.34.2	Axle Width For Pallets 800 X 1200, Lengthways	4008	4270
4.35	Turning Radius	2135	2337
PERFORMANCE DATA			
5.1	Travel Speed, Loaded / Unloaded	14/15	14/15
5.2	Lift Speed, Loaded / Unloaded	300/450	300/450
5.3	Lowering Speed, Loaded / Unloaded	500/350	500/350
5.6	Max. Drawbar Pull, Loaded / Unloaded	13280/-	14270/-
5.8	Max. Gradeability, Loaded / Unloaded	15	15
5.10	Service Brake	Drumbrake	Drumbrake
MOTOR / BATTERY			
6.1	Drive Motor Rating S2 60 Min	10	14
6.2	Lift Motor Rating A1 S3 15%	14	16.5
6.4	Battery Voltage, Nominal Capacity (Opt)	48/600(660)	80/500(550)
6.5	Battery Weight	950	1295
6.7	Battery Compartment Dimensions L/W/H	984x666x744	984x666x744
OTHER DETAILS			
8.1	Type Of Drive Control	AC	AC
8.2	Operating Pressure, System / Attachments	190/120	190/120
8.3	Oil Volume For Attachments	40	40

25/30/35 BE-X DIMENSIONS

DIMENSIONS



25/30/35 BE-X MAST SPECIFICATION

25BE-X MAST

Mast Type	Maximum Fork Height (mm)	Overall Height (Lowered) (mm)	Free Lift Height (mm)			Mast Tilt (deg)		Load capacity without Shitshift 500mm LC	Truck Weight (Unloaded) (kg)
			With Load Backrest	Without Load Backrest	Without Load Backrest (3/4 SPOOL)	RWD	BWD		
2 Stage Limited Free Lift	L900	2040	155	155	155	6	10	2500	2500
	V230	2190	155	155	155	6	10	2500	2460
	V400	2590	155	155	155	6	10	2460	2200
	V450	2890	155	155	155	6	6	2250	2240
2 Stage Full Free Lift	V500	3040	155	155	155	6	6	2260	2140
	VF295	2950	240	134	134	6	6	2500	2500
	VF325	3250	290	100	1464	6	6	2500	2450
	VF345	3450	290	110	1564	6	6	2500	2410
3 Stage Full Free Lift	TF430	4305	2040	860	134	6	6	2370	2240
	TF450	4505	2440	960	144	6	6	2330	2200
	TF470	4705	2190	1010	1464	6	6	2290	2170
	TF500	5005	2200	1100	1464	6	6	2240	2120
TF550	5505	2490	1310	1780	6	6	2150	2030	
	TF600	6005	2690	1510	1954	6	6	2050	1940

V: 2 Stage wide visibility lift mast / VF: 2 Stage wide visibility full free lift mast / TF: Triplex full free lift mast

*: Standard

MAST SPECIFICATION

LOAD CAPACITY

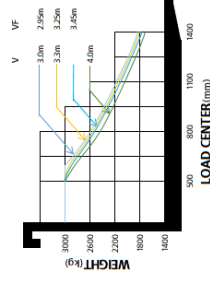
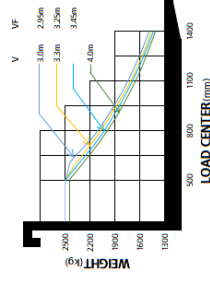
30BE-X MAST

Mast Type	Maximum Fork Height (mm)	Overall Height (Lowered) (mm)	Free Lift Height (mm)		Mast Tilt (deg)		Load Capacity without Sideshift		Truck Weight (Unloaded) (kg)	
			With Load Backrest	Without Load Backrest (3/4 SPOOL)	FWD	BWD	500mm LC	500mm LC		
2 Stage Limited Free Lift	V300	3005	2040	155	155	6	10	3000	3000	4947
	V330	3305	2190	155	155	6	10	3000	2970	4973
	V400	4005	2950	155	155	6	10	2980	2810	5049
	V450	4505	2890	155	155	6	6	2860	2700	5122
2 Stage Full Free Lift	VF295	5005	340	155	155	6	6	2750	2590	5167
	VF295	2955	2040	860	1314	6	6	3000	3000	5048
	VF325	3255	2190	1010	1464	6	6	3000	2990	5083
	VF345	3455	2290	1110	1564	6	6	3000	2900	5179
3 Stage Full Free Lift	TF480	4805	2040	860	1314	6	6	2880	2710	5146
	TF480	4805	2140	960	1414	6	6	2840	2620	5169
	TF470	4705	2190	1010	1464	6	6	2800	2650	5182
	TF500	5005	2290	1110	1564	6	6	2740	2570	5204
Free Lift	TF550	5505	2490	1310	1764	6	6	2680	2470	5255
	TF600	6005	2690	1510	1964	6	6	2520	2370	5349

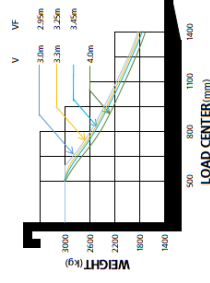
*: Standard

V : 2 Stage wide visibility lift mast / VF : 2 Stage wide visibility full free lift mast / TF : Triplex full free lift mast

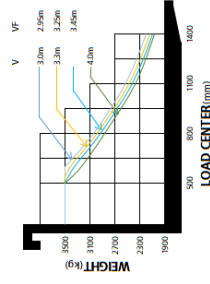
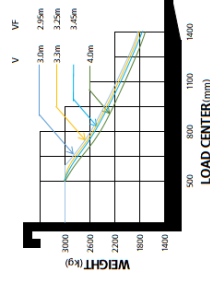
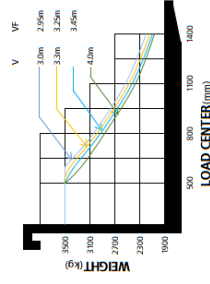
25BE-X



30BE-X



35BE-X



35BE-X MAST

Mast Type	Maximum Fork Height (mm)	Overall Height (Lowered) (mm)	Free Lift Height (mm)		Mast Tilt (deg)		Load Capacity without Sideshift		Truck Weight (Unloaded) (kg)	
			With Load Backrest	Without Load Backrest (3/4 SPOOL)	FWD	BWD	500mm LC	500mm LC		
2 Stage Limited Free Lift	V500	3005	2040	155	155	6	10	3500	3500	5272
	V330	3305	2190	155	155	6	10	3500	3440	5298
	V400	4005	2950	155	155	6	10	3460	3250	5374
	V450	4505	2890	155	155	6	6	3320	3120	5447
2 Stage Full Free Lift	VF295	5005	340	155	155	6	6	3200	3000	5492
	VF295	2955	2040	860	1314	6	6	3500	3480	5373
	VF325	3255	2190	1010	1464	6	6	3500	3390	5408
	VF345	3455	2290	1110	1564	6	6	3500	3340	5444
3 Stage Full Free Lift	TF480	4805	2040	860	1314	6	6	3350	3140	5471
	TF450	4505	2140	960	1414	6	6	3300	3090	5494
	TF470	4705	2190	1010	1464	6	6	3250	3050	5507
	TF500	5005	2290	1110	1564	6	6	3180	2980	5529
Free Lift	TF550	5505	2490	1310	1764	6	6	3060	2870	5580
	TF600	6005	2690	1510	1964	6	6	2810	2690	5674

*: Standard

V : 2 Stage wide visibility lift mast / VF : 2 Stage wide visibility full free lift mast / TF : Triplex full free lift mast

STANDARD/OPTIONAL EQUIPMENT

MODEL	25BE-X	30BE-X	35BE-X
OPERATION ROOM			
Overhead guard (Height 275mm)	<input type="checkbox"/>	<input type="checkbox"/>	<input type="checkbox"/>
Full Cabin	<input type="checkbox"/>	<input type="checkbox"/>	<input type="checkbox"/>
Partial Cabin (Top, Front, Rear, Viper)	<input type="checkbox"/>	<input type="checkbox"/>	<input type="checkbox"/>
A/C heater	<input type="checkbox"/>	<input type="checkbox"/>	<input type="checkbox"/>
Grammar Seat + Belt + Arm rest + Belt switch	<input type="checkbox"/>	<input type="checkbox"/>	<input type="checkbox"/>
Grammar Seat + Belt + Arm rest	<input type="checkbox"/>	<input type="checkbox"/>	<input type="checkbox"/>
Non Suspension Seat + Belt + OPSS	<input type="checkbox"/>	<input type="checkbox"/>	<input type="checkbox"/>
Others - Backrest	<input type="checkbox"/>	<input type="checkbox"/>	<input type="checkbox"/>
Rear Grip with Horn Button	<input type="checkbox"/>	<input type="checkbox"/>	<input type="checkbox"/>
MAST			
Mast-2 Stage V (3,000mm)	<input type="checkbox"/>	<input type="checkbox"/>	<input type="checkbox"/>
Mast-2 Stage VE 3 Stage 1F	<input type="checkbox"/>	<input type="checkbox"/>	<input type="checkbox"/>
Fork Std. - 1,050mm	<input type="checkbox"/>	<input type="checkbox"/>	<input type="checkbox"/>
Fork Opt. - 900mm/1150mm - 2,400mm	<input type="checkbox"/>	<input type="checkbox"/>	<input type="checkbox"/>
Carriage-Hook	<input type="checkbox"/>	<input type="checkbox"/>	<input type="checkbox"/>
Hook Carriage with integrated Side Shift	<input type="checkbox"/>	<input type="checkbox"/>	<input type="checkbox"/>
Hook Carriage with integrated Side Shift and Fork Positioner	<input type="checkbox"/>	<input type="checkbox"/>	<input type="checkbox"/>
Hook on Side Shifter	<input type="checkbox"/>	<input type="checkbox"/>	<input type="checkbox"/>
BATTERY			
Lead acid - 25BE-X 48V/600Ah, 30/35BE-X 80V/500Ah	<input type="checkbox"/>	<input type="checkbox"/>	<input type="checkbox"/>
Lead acid - 25BE-X 48V/660Ah, 30/35BE-X 80V/550Ah	<input type="checkbox"/>	<input type="checkbox"/>	<input type="checkbox"/>
Li-Ion - 25BE-X 51.2V/450Ah, 30/35BE-X 83.2V/450Ah	<input type="checkbox"/>	<input type="checkbox"/>	<input type="checkbox"/>
Charger: Lead acid - 3P 220/380/440V, 50/60Hz	<input type="checkbox"/>	<input type="checkbox"/>	<input type="checkbox"/>
Charger: Li-Ion - 3P 380/440V, 50/60Hz	<input type="checkbox"/>	<input type="checkbox"/>	<input type="checkbox"/>
Battery Trolley (Narrow/Wide)	<input type="checkbox"/>	<input type="checkbox"/>	<input type="checkbox"/>
Canopy	<input type="checkbox"/>	<input type="checkbox"/>	<input type="checkbox"/>

MODEL	25BE-X	30BE-X	35BE-X
HYDRAULIC			
2 Spool MCV	<input type="checkbox"/>	<input type="checkbox"/>	<input type="checkbox"/>
3 Spool MCV	<input type="checkbox"/>	<input type="checkbox"/>	<input type="checkbox"/>
4 Spool MCV	<input type="checkbox"/>	<input type="checkbox"/>	<input type="checkbox"/>
Piping (W/V/T/F)	<input type="checkbox"/>	<input type="checkbox"/>	<input type="checkbox"/>
V6 46 Oil	<input type="checkbox"/>	<input type="checkbox"/>	<input type="checkbox"/>
V6 68 Oil for Tropical Area	<input type="checkbox"/>	<input type="checkbox"/>	<input type="checkbox"/>
V6 15 Oil for Cold Area	<input type="checkbox"/>	<input type="checkbox"/>	<input type="checkbox"/>
TYRES			
Pneumatic Tyre	<input type="checkbox"/>	<input type="checkbox"/>	<input type="checkbox"/>
Solid Tyre	<input type="checkbox"/>	<input type="checkbox"/>	<input type="checkbox"/>
Non-Marking Tyre	<input type="checkbox"/>	<input type="checkbox"/>	<input type="checkbox"/>
VISIBILITY			
Front LED Lamp	<input type="checkbox"/>	<input type="checkbox"/>	<input type="checkbox"/>
Front and Rear Lamp	<input type="checkbox"/>	<input type="checkbox"/>	<input type="checkbox"/>
LED Beacon Lamp	<input type="checkbox"/>	<input type="checkbox"/>	<input type="checkbox"/>
Red Zone	<input type="checkbox"/>	<input type="checkbox"/>	<input type="checkbox"/>
Blue Spot	<input type="checkbox"/>	<input type="checkbox"/>	<input type="checkbox"/>
Red Zone + Blue Spot	<input type="checkbox"/>	<input type="checkbox"/>	<input type="checkbox"/>
Side LH/RH & Panorama Mirror	<input type="checkbox"/>	<input type="checkbox"/>	<input type="checkbox"/>
Rear camera	<input type="checkbox"/>	<input type="checkbox"/>	<input type="checkbox"/>
Front & rear camera	<input type="checkbox"/>	<input type="checkbox"/>	<input type="checkbox"/>
SAFETY / CONVENIENCE			
Load Sensor	<input type="checkbox"/>	<input type="checkbox"/>	<input type="checkbox"/>
OPSS - Travel	<input type="checkbox"/>	<input type="checkbox"/>	<input type="checkbox"/>
OPSS - Travel & Mast	<input type="checkbox"/>	<input type="checkbox"/>	<input type="checkbox"/>
Travel Alarm	<input type="checkbox"/>	<input type="checkbox"/>	<input type="checkbox"/>
Seatbelt Interlock	<input type="checkbox"/>	<input type="checkbox"/>	<input type="checkbox"/>

- Standard
- Optional

HYUNDAI



HD Hyundai Construction Equipment Europe nv, Hyundailaan 4,
3980 Tessenderlo, Belgium. Tel: (32) 14-56-2200 Fax: (32) 14-59-3405

Specifications and design are subject to change without notice.
Pictures of HD Hyundai Material Handling Europe products may
show other than standard equipment. This brochure is intended for
European markets only.

READY TO CHANGE YOUR WORLD?

Contact your HD Hyundai dealer.
hyundai-mh.eu/en/dealer-locator