

# 180/250D-9V/300D-9VC

STAGE V DIESEL FORKLIFT TRUCKS



**Load Capacity**  
18000kg – 30000kg

**Load Centre Distance**  
800mm – 1200mm

**Engine Power**  
209kW – 242kW

**Lift Height**  
4020mm – 4040mm

# UPGRADE YOUR OFFICE

## The New Heavy-line Range of Hyundai Forklifts

If you're spending all your working day in an uncomfortable, cramped cab with badly organised controls, then it's time to upgrade your office. The new Hyundai 180, 250D-9V, 300D-9VC Heavy Line Forklifts are quieter and more comfortable, with easy-to-use fingertip controls for complete stress-free working. And with a new design that enables greater visibility and includes many added safety features, productive, peace of mind operating is assured.



# UPGRADE YOUR PRODUCTIVITY

By listening to customer comments, we've been able to design our next generation cab. This extra insight has enabled us to improve operator comfort, control and convenience to allow more productive working in any environment. Easy-to-see, multi-functional displays also keep operators informed about machine performance and outside obstacles.

## Designed for efficient operation

### Quieter

We've reduced noise dramatically inside the cab by optimising engine capacity, reducing cooling fan RPM and redesigning the cabin structure.

### Easy-to-use steering wheel

The problem of heavy handling has been significantly improved with a new steering wheel design. It can be adjusted up and down by 85mm and forwards and backwards by 36 degrees. In addition, operator control has been enhanced by reducing its diameter by 35mm.

### Digital displays

A multi-functional digital display cluster delivers essential information in colour. It is equipped with various features such as function settings and malfunction diagnosis of major parts.



UP TO A  
**7.0 dB**  
NOISE REDUCTION

A

The inching and brake pedals make for easier operation.

A double 12V Powerport and 4 storage areas are designed for specific uses, including mobile phone and drink holders

### Stay comfortable

Working for long hours in the cab is no problem, with air conditioning through multiple air vents that control the air volume in four directions.

### Increased visibility

Operator visibility has been improved using distortionless single curvature front glass that doesn't distort the view and sun visors.

### Fingertip control

Fine controllability has been improved by our new fingertip system which changes MCV control to dither control. The system provides fast response, within 0.1 seconds and gives the same controllability regardless of ambient temperature. All switches have been placed in one row, in order of use frequency. The AC control Dial is now integrated in the headliner.



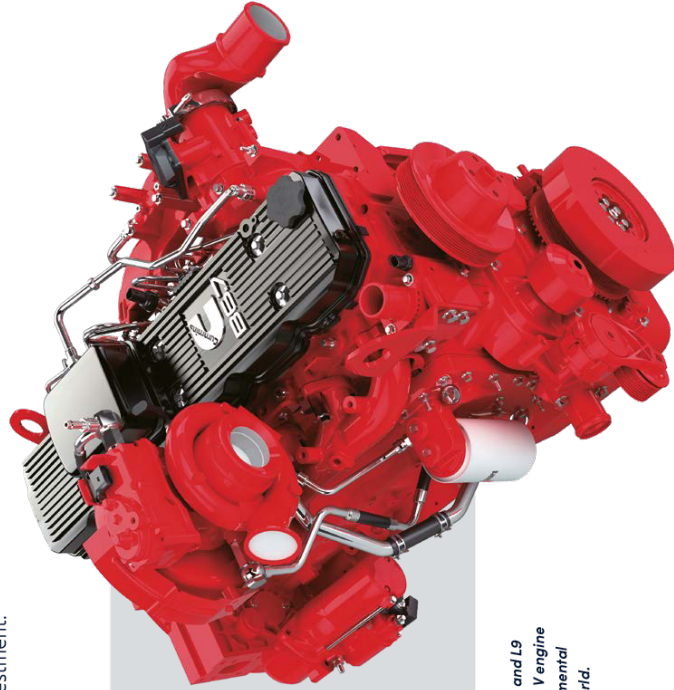


# UPGRADE YOUR EFFICIENCY

With a new reliable Stage V engine and upgraded transmission along with many new features and technologies, the new Hyundai Heavy Line Forklifts are more fuel efficient compared to our previous models. And when you add improved serviceability thanks to the electronically tilting cabin, plus Hyundai's remote management system and world-class support, you're looking at a low cost of ownership that's a great business investment.

## EU Stage V Certified Engine

Reliable Cummins B series engines are widely used throughout the world and they satisfy the latest European and emission regulations. The EGR (Exhaust Gas Reduction) system was removed to improve energy efficiency and reliability. A new DPF has been added, in addition to the existing DOC and SCR.



**STAGE**  
The Cummins B6.7 (180D-9V) and L9 (250D-9LV, 300D-9VC) Stage V engine satisfies the strictest environmental emission regulation in the world.

## The technology to improve efficiency

### Upgraded ZF transmission

Responsiveness and shift timing are optimised, and SIL 2 European safety function regulation is satisfied. In addition, the shifting system boasts increased reliability as a non-contact shifting lever not affected by moisture is applied.

### Load sensing hydraulics

Fuel efficiency is dramatically improved by using an optimised engine, removing the EGR system and applying a Load Sensing Variable Displacement Pump and a Load Sensing MCV.

### Engine output selection button

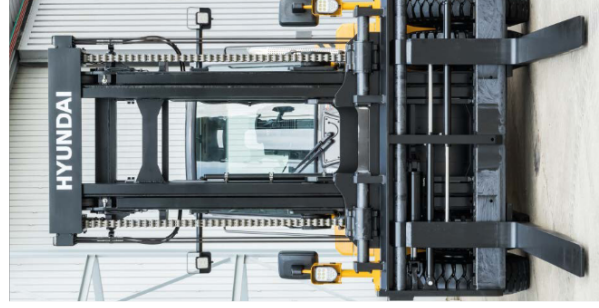
On the engine output button, STD mode is set to 80% output of PWR mode and can be selected for reducing fuel consumption. PWR mode is available for full load transit or uphill driving.



Engine output button



Improved  
**FUEL EFFICIENCY**  
(Compared to previous model)



### Greater visibility improves productivity

Usually a 3-stage mast compromises forward visibility due to the primary cylinder being in the centre. Our 3-stage TS mast provides a wider view by placing the primary cylinder on the left and right sides.

### Tilt lock function

This new addition locks the back tilt to prevent the natural sagging of the mast.



# UPGRADE YOUR SAFETY

The Hyundai approach to safety goes far beyond just meeting regulatory standards. We prioritise safety in every aspect of our machines and work with our customers to keep improving protection for operators, co-workers, buildings, materials and of course the machines themselves.

## Visibly safer

### 3-stage TS mast

The 3-stage TS mast provides a wider working view by placing the primary cylinder on the left and right sides.

### Minimising blind spots

We've minimised blind spots in the field of view by increasing the glass area and there is now no filler in the middle of the door. This also prevents damaging the glass when moving objects in the cabin.

### Rear view camera

The addition of an optional rear view camera provides extra peace of mind for operators, especially when working in confined spaces.

### Heated side mirror

A large side mirror is installed on the front wheel fender to secure a wider rear view. Optionally the mirror can be heated, preventing freezing.



## Extra safety features

### Password protection

A password can be set to prevent unauthorised driving and theft. The engine cannot be started without the password.

### Auto-parking brake

When the engine stops or OPSS starts, the parking brake is automatically activated to prevent human error. If the driver needs to use the parking brake while the engine is running, they can apply or release it using a dedicated button.

### OPSS system

The OPSS restricts driving, lifting, and tilting when the operator leaves the driver's seat in order to prevent accidents.

### Speed limit

A maximum driving speed can be set to prevent accidents caused by exceeding the speed limit. Even with the maximum driving speed set hill-climbing and mast working performance is maintained.

### Road slope (STD) and steering angle display OPTIONAL

The road slope is sensed and displayed in real time. When the set value is exceeded, the symbol turns red and a warning buzzer sounds. The steering tyre position is also displayed in real time.



Additional options for safety include Auto Tilling which automatically maintains the level of the fork with the ground.



# UPGRADE YOUR MAINTENANCE

Our new Heavy Line Diesel Forklifts are designed with quick, low-effort servicing in mind, while every component and material has been optimised to ensure a long, trouble-free life. Hyundai's innovative Hi MATE telematics system enables full monitoring of machine activity and performance for greater productivity and profitability.

## Less maintenance. More uptime

### Improved routine maintenance

Easy access for maintenance means regular checks get done faster, giving you more uptime and reducing operating costs. Ground level access to filters, lube fittings and master switches make servicing more convenient.

### Longer service intervals

The fuel filter service interval on the new engine has been increased by 100% – from 500 hours to 1,000 hours, greatly reducing maintenance costs.

### Easy access tilting cab

The cab can be tilted up to 52 degrees, enabling easy access to the powertrain, hydraulics and electrical system. The cooling system and engine consumables can be easily managed by opening the cover of the wing-type engine bay.

### Self-diagnosis of engine and consumables management

The history of failure details can be checked on the cluster screen. And when the replacement cycle of any consumables is entered into the cluster, parts that are due replacement are displayed on the monitor.

### No cab tilting when the door is opened

If the right side door is open, damage to it is prevented by no cabin tilting. The cabin can be opened and closed both automatically or manually.

### Tankless-type compressor

Unlike tank-type compressors that require time to be refilled, our tankless-type compressor instantly delivers compressed air at a constant pressure.

### Automatic DPF & SCR regeneration

The DPF and SCR are automatically regenerated with the help of hydraulic engine load. The DPF Filter element can be easily removed through the counterweight opening.

# Hi MATE

It's convenient, easy and valuable. Hi MATE, Hyundai's remote management system, utilises GPS-satellite technology to provide customers with the highest level of service and product support available.

### Increase productivity

By providing information such as service hours, idle time and fuel consumption, Hi MATE saves you money and improves productivity. Service alerts enable better maintenance planning.

### ECD (Engine Connected Diagnostics)

ECD provides troubleshooting information as well as tailored servicing. Service technicians are supported with remote diagnostics allowing them to achieve quick resolution rate

### Monitor your machines

Hi MATE's real-time location information allows convenient monitoring of your equipment via the Hi MATE website or mobile app.

### Mobile fleet app

Our Mobile Fleet app provides all the information you need to run your fleet efficiently and economically.

### Improve Security

Protect your equipment from theft or unauthorised usage. Hi MATE's geofencing alerts notify you automatically when a machine leaves a predetermined zone.



*HCE-DT Air allows service technicians to connect to your equipment wirelessly via smartphone and laptop right on site.*

## Keeping you covered

Hyundai genuine parts and accessories are designed to keep your machine running at optimum performance, providing increased uptime, comfort

and productivity. Our 13000m<sup>2</sup> European Parts Warehouse guarantees 24-hour delivery across our dealer network.





# TAKE THE TOUR!

## UPGRADE YOUR OFFICE

- New Next Generation cab
- Reduced cabin noise (4,9 to 5,9dB)
- Multi-functional digital display cluster
- Air suspension & swivel seat **OPTION**
- Air conditioning
- 1-piece, distortionless glass
- Fingertip controls

## UPGRADE YOUR EFFICIENCY

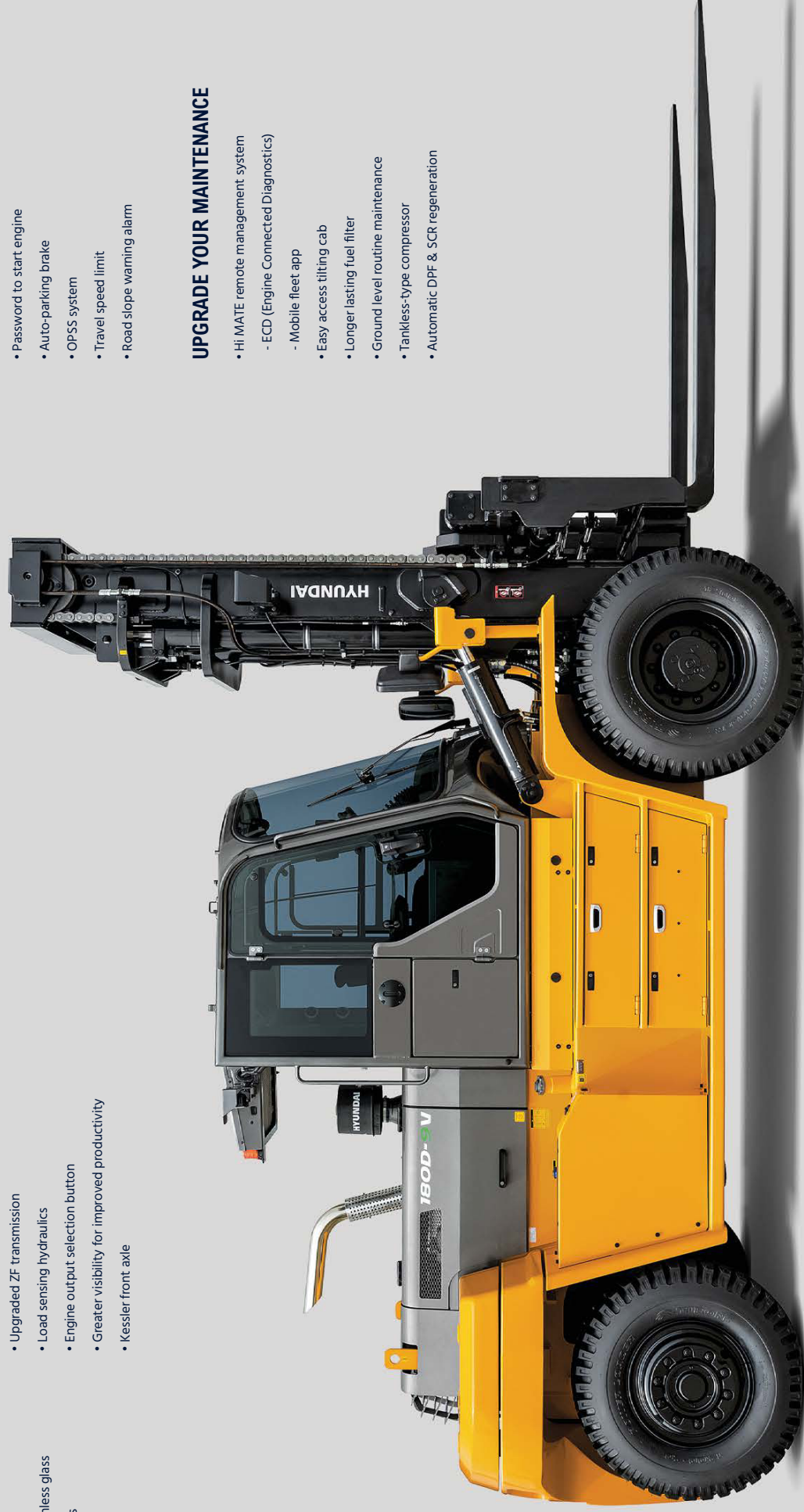
- Reliable Stage V Cummins B series engine
- Improved fuel efficiency
- No EGR (Exhaust Gas Reduction) system
- New added DPF
- Upgraded ZF transmission
- Load sensing hydraulics
- Engine output selection button
- Greater visibility for improved productivity
- Kessler front axle

## UPGRADE YOUR SAFETY

- 3-stage TS mast with wider field of view
- Increased glass area
- Rear view camera
- Heated side mirror
- Password to start engine
- Auto-parking brake
- OPSS system
- Travel speed limit
- Road slope warning alarm

## UPGRADE YOUR MAINTENANCE

- Hi MATE remote management system
- ECD (Engine Connected Diagnostics)
- Mobile fleet app
- Easy access tilting cab
- Longer lasting fuel filter
- Ground level routine maintenance
- Tankless-type compressor
- Automatic DPF & SCR regeneration



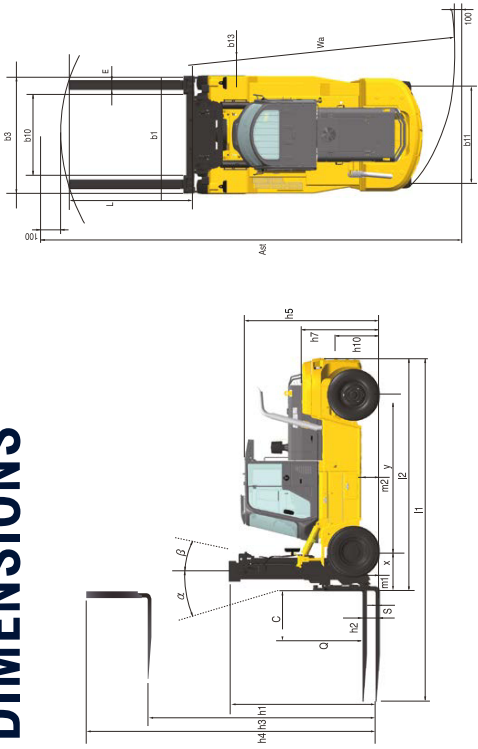


180/250D-9V/300D-9VC

# SPECIFICATIONS

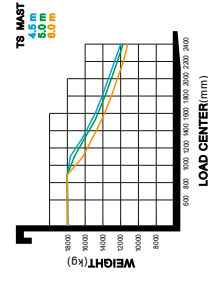
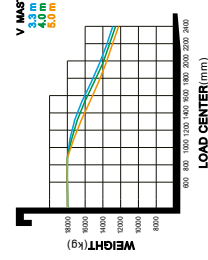
IDENTIFICATION		1.1	Hyundai	Hyundai	Hyundai	300D-9V
Manufacturer (abbreviation)		1.2	180D-9V	250D-9V	300D-9V	300D-9V
Manufacturer's type designation		1.3	Diesel	Diesel	Diesel	Diesel
Drive: electric (battery or mains), diesel, petrol, fuel gas		1.4	Sealed	Sealed	Sealed	Sealed
Type of operation: hand, pedestrian, standing, sealed, order-picker		1.5	kg	25000	30000	30000
Load capacity / rated load		1.6	C	900	1200	900
Load center distance		1.8	x	999	1147	1147
Load distance, center of drive axle to fork		1.9	y	3750	4250	4250
Wheelbase		2.1	kg	25926	38760	38940
Service weight		2.2	kg	39933 / 3874	58007 / 5473	63180 / 6660
Axle loading, loaded front/rear		2.3	kg	12338 / 12983	19501 / 19279	19437 / 19403
Axle loading, unloaded front/rear		3.1	Pneumatic	Pneumatic	Pneumatic	Pneumatic
Tires - solid rubber, superelastic, pneumatic, polyurethane		3.2	12.00 R20	14.00-24-32PR	14.00-24-32PR	14.00-24-32PR
Tire size, front		3.3	12.00 R20	14.00-24-32PR	14.00-24-32PR	14.00-24-32PR
Tire size, rear		3.5	4x2	4x2	4x2	4x2
Wheels, number front / rear (x = driven wheels)		3.6	mm	1848	2212	2212
Tread, front		3.7	mm	2025	2140	2140
Tread, rear		4.1	α/β	10 / 10	12 / 10	12 / 10
Tilt of mast/fork carriage, forward/backward		4.2	h1	3700	3870	3870
Height, mast lowered		4.3	h2	0	0	0
Free lift		4.4	h3	4020	4040	4040
Lift height		4.5	h4	5655	5837	5837
Height, mast extended		4.7	h5	2985	3278	3278
Height of overhead guard (cabin)		4.8	h7	1826	2150	2150
Seat height / stand height rel. to sp		4.12	h10	572	572	572
Coupling height		4.19	mm	8045	8847	8847
Overall length		4.20	mm	5595	6397	6397
Length to base of forks		4.21	b1	2540	3069	3069
Overall width		4.22	100x350x2450	110x250x2450	110x250x2450	110x250x2450
Fork dimensions		4.23	mm	-	-	-
Fork carriage iso 228, class / type a / b		4.24	b3	2540	2850	2950
Fork-carriage width		4.31	m1	245	300	300
Ground clearance, below mast, loaded		4.32	mm	356	445	445
Ground clearance, center of wheelbase		4.34.1	Ast	8983	9692	9692
Axle width for pallets 1000 x 1200 crossways		4.34.2	Ast	8983	9692	9692
Axle width for pallets 800 x 1200 lengthways		4.35	V8	5334	5830	5830
Turning radius		4.36	mm	2048	2030	2030
Smallest pivot point distance		5.1	km/h	34.2 / 38.9	27.4 / 30.7	26.4 / 30.3
Travel speed, loaded / unloaded		5.2	mm/s	380 / 400	250 / 265	240 / 265
Lift speed, loaded / unloaded		5.3	mm/s	450 / 395	380 / 265	380 / 265
Lowering speed, loaded / unloaded		5.5	N	-	-	-
Drawer pull, loaded / unloaded		5.6	N	149354 / 140416	214227 / 203553	222104 / 209230
Max. Drawer pull, loaded / unloaded		5.7	%	-	-	-
Gradability, loaded / unloaded		5.8	%	32.3 / 30.3	32.5 / 28.8	29.9 / 26.7
Max. Gradability, loaded / unloaded		5.9	s	-	-	-
Acceleration time, loaded / unloaded		5.10	Hydraulic	Hydraulic	Hydraulic	Hydraulic
Service brake		7.1	CUMMINS / I9	CUMMINS / I9	CUMMINS / I9	CUMMINS / I9
Engine manufacturer / type		7.2	kw/rpm	209 / 2200	242 / 2100	242 / 2100
Engine power acc. to iso 1585		7.3	kgf m/rpm	117 / 1500	166.9 / 1100	166.9 / 1100
Maximum torque		7.4	bar	6 / 6630	6	6
No. Of cylinders / displacement		7.5	bar	12.7	23.6	23.6
Fuel consumption acc. to vdi cycle		8.1	L/PM	Power Shift	Power Shift	Power Shift
Type of drive control		8.2	dB (A)	100	100	100
Operating pressure, system / attachments		8.3	Oil volume for attachments	73.5	73.5	73.5
Oil volume for attachments		8.4	Pin	Pin	Pin	Pin
Sound level at the driver's ear according to din 12053		8.5	Pin	Pin	Pin	Pin
Trailer coupling, type din						

# DIMENSIONS



# 180D-9V MAST SPECIFICATION

Mast Type	Maximum Fork Height (mm)	Overall Height (Lowered) mm	Free Lift Height (mm)	Mast Tilt (deg)		Load capacity 900mm LC	Truck Weight (Unloaded) (kg)
				FWD	BWD		
2 Stage Without Free Lift	V300	3200	0	10	10	18000	25114
	V350	3220	0	10	10	18000	25242
	V360	3250	0	10	10	18000	25318
	V400	4020	0	10	10	18000	25689
	V450	4620	0	10	10	18000	26272
3 Stage Full Free Lift	V500	5020	0	10	10	18000	26426
	V550	5520	0	10	10	18000	26841
	V600	6020	0	10	10	18000	26838
	V650	6520	0	10	10	18000	27028
	V700	7020	0	10	10	18000	26498
3 Stage Full Free Lift	TS460	4634	2950	1538	10	18000	26498
	TS508	5084	3100	1698	10	18000	26670
	TS538	5394	3200	1788	10	18000	26841
	TS568	5684	3300	1888	10	18000	26833
	TS600	6044	3400	2008	10	18000	27070
3 Stage Full Free Lift	TS658	6584	3600	2168	10	18000	27284
	TS700	7034	3750	2338	10	17960	27413

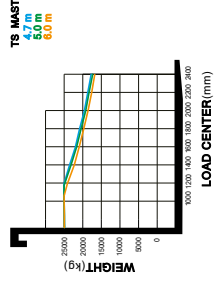
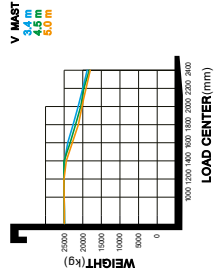




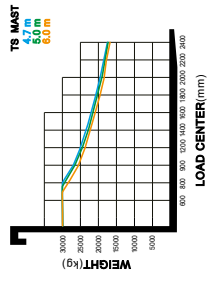
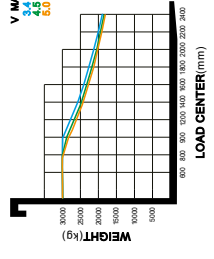
## 250D-9V MAST SPECIFICATION

## 300D-9VC MAST SPECIFICATION

250D-9V MAST									
Mast Type	Maximum Fork Height (mm)	Overall Height (Lowered) mm	Free Lift Height (mm)	Mast Tilt (deg)	BWD	Load capacity 60mm LC	Truck Weight (Unloaded) (kg)		
2 Stage Without Free Lift	V545	3486	0	12	10	25000	38201		
	V400	4040	0	12	10	25000	38780		
	V450	4640	0	12	10	25000	39058		
	V500	5040	0	12	10	25000	39350		
	V550	5540	0	12	10	25000	39629		
	V600	6040	0	12	10	25000	40213		
3 Stage Full Free Lift	V650	6540	0	12	10	24900	40526		
	V700	7040	0	12	10	24450	40815		
	TS470	4712	746	10	10	25000	41286		
	TS500	5012	3500	796	10	24900	41532		
	TS550	5312	3600	846	10	24600	41739		
	TS600	5612	3700	896	10	24400	41910		
TS650	6016	3855	963	10	24100	42143			
	6512	4000	1046	10	23600	42436			



300D-9V MAST									
Mast Type	Maximum Fork Height (mm)	Overall Height (Lowered) mm	Free Lift Height (mm)	Mast Tilt (deg)	BWD	Load capacity 60mm LC	Truck Weight (Unloaded) (kg)		
2 Stage Without Free Lift	V545	3486	0	12	10	30000	38201		
	V400	4040	0	12	10	30000	38780		
	V450	4640	0	12	10	30000	39058		
	V500	5040	0	12	10	30000	39350		
	V550	5540	0	12	10	30000	39629		
	V600	6040	0	12	10	30000	40213		
3 Stage Full Free Lift	V650	6540	0	12	10	29800	40526		
	V700	7040	0	12	10	29200	40815		
	TS470	4712	746	10	10	30000	41286		
	TS500	5012	3500	796	10	29400	41532		
	TS550	5312	3600	846	10	29000	41739		
	TS600	5612	3700	896	10	28700	41910		
TS650	6016	3855	963	10	28300	42143			
	6512	4000	1046	10	27700	42436			



# STANDARD/OPTIONAL EQUIPMENT

CABIN & INTERIOR	180D-9V	250D-9V	300D-9VC
New Cabin	•	•	•
Wiper for Top window	•	•	•
A/C & Heater*	•	•	•
<b>Seat</b>			
Long Back Seat - Full Suspension	•	•	•
Seat Options - Air suspension & Swivel seat, Leather seat, Heat			
Seat Accessories - Orange belt, Arm rest, Buckle switch	•	•	•

LEVER	180D-9V	250D-9V	300D-9VC
Lever - General	•	•	•
Finger Tip	•	•	•
Bluetooth Radio	•	•	•

\*The air conditioning system contains fluorinated greenhouse gas refrigerant R134a (Global Warming Potential: 1,430) The system contains 0.55 kg refrigerant representing a CO<sub>2</sub> equivalent of 0.787 metric tonnes.

MAST & ATTACHMENT	180D-9V	250D-9V	300D-9VC
<b>Mast</b>			
Standard Mast	V400	V400	V400
2-Stage Mast	•	•	•
3-Stage Mast			
<b>Fork</b>			
Standard Fork	2440mm	2440mm	2440mm
Fork Options - 1,200mm - 2,600mm Fork			
<b>Carriage</b>			
Shafftop Type Carriage	•	•	•
Carriage Options			
Shaft	•	•	•
Sliding	•	•	•
Sliding & Holder			
Simple type			
<b>Attachment</b>			
Integral Side Shift	•	•	•
Fork Positioner - Independent, Synchronized			
Side Shift & Positioner - Independent, Synchronized			

HYDRAULIC	180D-9V	250D-9V	300D-9VC
4-3000 MCV + attached piping for V400 Mast	•	•	•
MCV Options - 5, Shock			
Advanced Piping for All MCVs & Masts			

TYRE	180D-9V	250D-9V	300D-9VC
Pneumatics - Tires	•	•	•
Tire Options - Solid Tires			

VISIBILITY	180D-9V	250D-9V	300D-9VC
<b>Lamp</b>			
Working Lamp - Front & Rear LED	•	•	•
<b>Mirror</b>			
L/H & R/H Back Mirror & Panorama	•	•	•
Mirror			
Heated L/H & R/H Back Mirror			
<b>Camera</b>			
Rear Camera			

CONVENIENCE	180D-9V	250D-9V	300D-9VC
Auto Tilt			
Load Sensor	•	•	•
Load Sensor & Angle Sensor			
Automatic Fan	•	•	•

SAFETY	180D-9V	250D-9V	300D-9VC
Seat Belt Interlock	•	•	•
LED Beacon Lamp			

OTHERS	180D-9V	250D-9V	300D-9VC
Air Compressor			
Under Cover			
Oil - VG46	•	•	•
Hi-MARE (General)			
Hi-MARE (Premium)			

- Standard
- X Not available

Standard and optional equipment may vary. Contact your Hyundai dealer for more information.

The photos may include attachments and optional equipment that are not available in your area.

Materials and specifications are subject to change without advance notice.





# HYUNDAI

Specifications and design are subject to change without notice. Pictures of Hyundai Material Handling Europe products may show other than standard equipment. This brochure is intended for European markets only.

Hyundai Construction Equipment Europe NV  
Hyundailaan 4, 3980 Tessenderlo, Belgium  
Tel: (+32) 14-56-2200 Fax: (+32) 14-59-3405

**MOVING YOU FURTHER**

Contact your Hyundai dealer.  
[hyundai-mh.eu](http://hyundai-mh.eu)

 **HYUNDAI**  
MATERIAL HANDLING

HY-MH-00033. 07/2023. EN. ISSUE 1